

**Nozzle type check valve
flanged**

**PN10
PN16**

SEWAGE

WATER



Non return check valve DN80

Product description (standard execution):

- Any-position installation approved
- Compact design - high tightness
- Maintenance free
- Shaft made of stainless steel 1.4305 according to EN 10088-1
- Sliding sleeve made of brass bronze or stainless steel
- Flange connection according to EN 1092-2 (DIN 2501) pressure PN10, PN16
- Face to face according to producer documentation JAFAR
- Body, disc and slideway made of grey iron EN-GJL 250; EN 1561
- Epoxy coating to EN 14091
- Product according to EN 1074-1; EN 1074-3
- Product marking according to EN 19; EN 1074

Application:

Water and sewage networks and tanks. Transport of non aggressive liquids.

Working conditions:

temp. up +70°C

working pressure up to 1.6 MPa

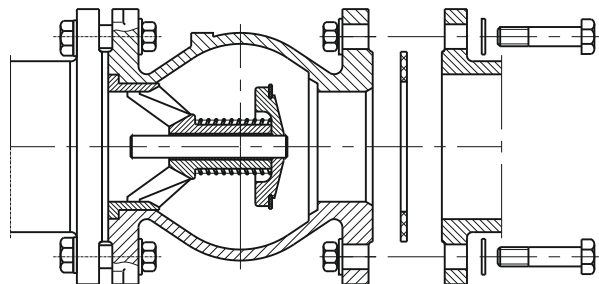
Test control:

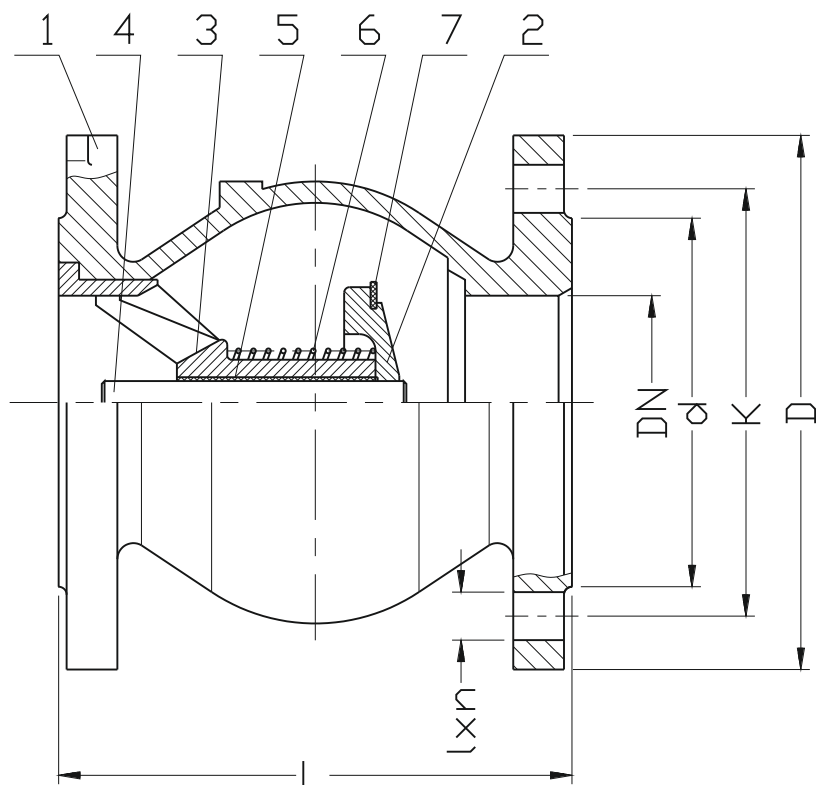
Water pressure test according to EN 1074-1; EN 1074-2; EN 12266-1

Seat: 0,5 to 1,1 xPN

Body: 1,5 x PN

Installation:





No.	Part	Standard execution
1	Body	Grey iron EN-GJL-250 EN 1561
2	Valve plug DN50-DN125	Brass or bronze EN 1982
2	Valve plug DN150-DN250	Grey iron EN-GJL-250 EN 1561
3	Centering DN50-DN100	Brass or bronze EN 1982
3	Centering DN125-DN250	Grey iron EN-GJL-250 EN 1561
4	Stem	Stainless steel 1.4305 EN 10088-1
5	Sleeve	Brass or bronze EN 1982
6	Spring	Stainless steel 1.4305 EN 10088-1
7	Gasket	Rubber NBR EN ISO 1629

DN	k	l x n	D	L	d	Kv	Weight
	PN16 (PN10)						
		[mm]				[m³/h]	[kg]
50	125	4x19	165	100	98	100	5,7
65	145	4x19	185	120	118	160	8,7
80	160	8x19	200	136	132	230	10,8
100	180	8x19	220	175	156	390	13,5
125	210	8x19	250	200	184	625	21,0
150	240	8x23	285	234	211	900	30,0
200	295	12x23 (8x23)	340	300	260	1100	49,0
250	355 (350)	12x28 (12x23)	405	370	319	1800	81,0